

Product Data Sheet

Product: ManWay Assembly



The ScanJet ManWay Assembly is specifically designed to seat in most all center entry manway's located on Road and Rail Tankers. This assembly is complete with 1.50" NPT(M) inlet connection x 1.50" NPT(F) discharge connection. A vapor recovery port and deflection plate is also fitted as standard with this item.



General Specifications

M.O.C.	: 316L S/S
Finish	: 2B Mill
Vapor Port	: Yes
Maximum Opening	: 24.00"
Minimum Opening	: 18.00"

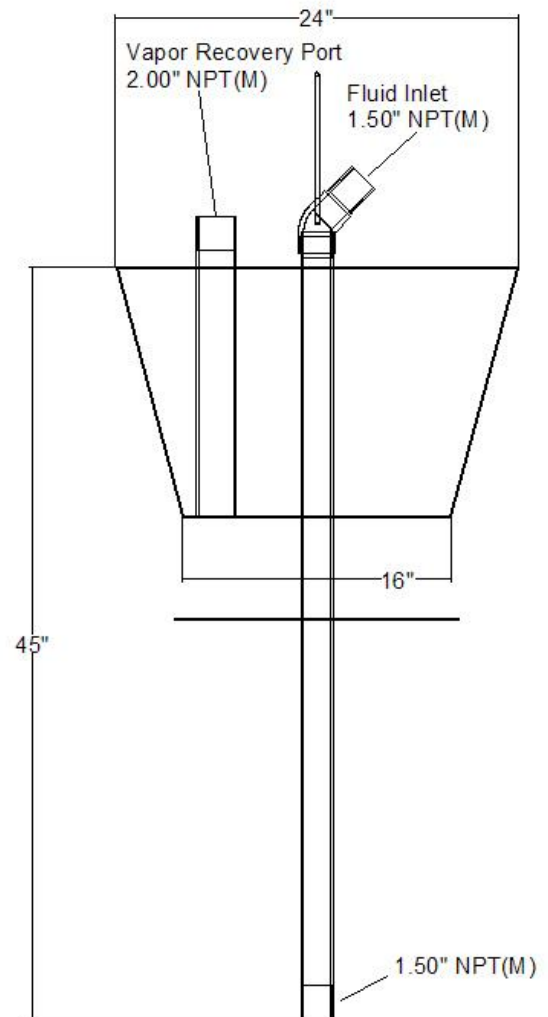


Image shown here is for the standard 177602-01 Manway Assembly. Add 1.00" on diameter of cone if Viton Vulcanization is included; part number 177602-05.

Part No.	Weight	Description
177602-01	66 lbs	No vulcanized cone
177602-05	99 lbs	Vulcanized cone; Viton